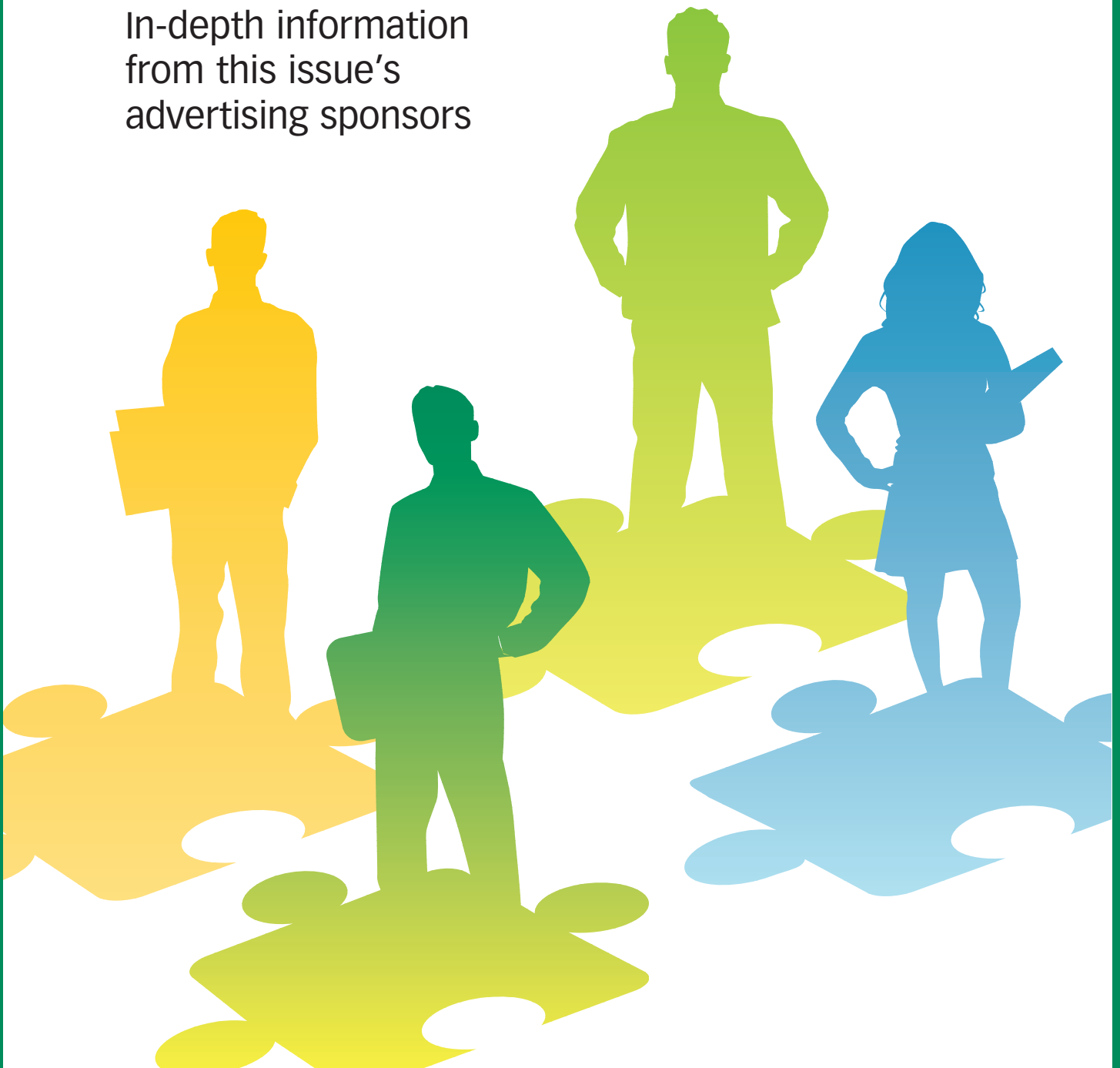
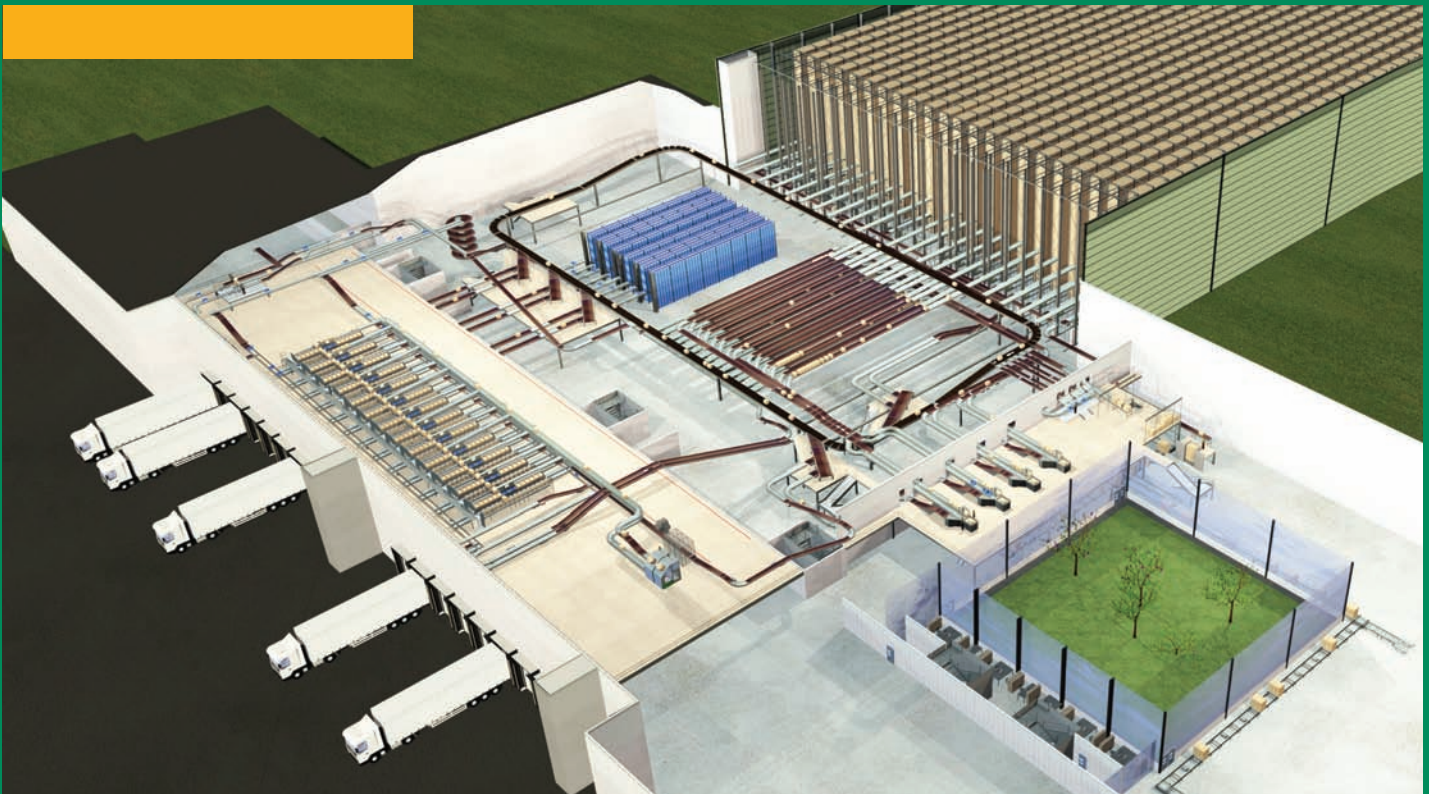


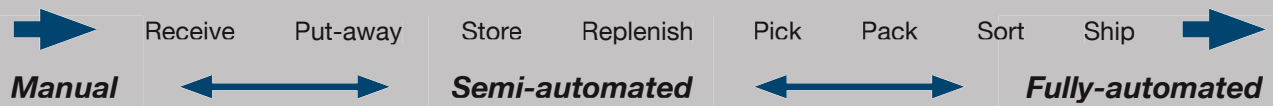
[PARTNER PROFILES]

In-depth information
from this issue's
advertising sponsors





4 Walls & 2 Windows™ approach to logistics results... Solutions from Receiving to Shipping



Dematic designs, builds, & life cycle supports logistics solutions that optimize material & information flow — from receiving to shipping, within the four walls of the factory, warehouse, or distribution center.

“4 walls” means we focus on applying a holistic engineered solution to the entire process that occurs within the 4 walls of the facility. “2 windows” means we look at upstream and downstream processes, flow, and activity to create an optimized system design.

Dematic offers a consultative holistic engineering approach; this method drives the development of non-biased, data driven logistics solution that range from manually operated to fully automated. A typical Dematic solution is built around process improvements, material handling technology, and software.

Our single source, vertically integrated capability reduces time, cost, & risk. This is accomplished by owning & controlling design services, real time WMCS software, material flow technologies, along with best in class engineering, project management, & customer services. Dematic is dedicated to improving logistics results. To that end, we guarantee successful system performance.

USinfo@dematic.com
www.dematic.com
1-877-725-7500

Continuing the *Rapistan* Tradition

Creating Logistics Results

DEMATIC

We Define What It Means To Be A New Breed Of 3PL



Process engineering and information systems lead the way.

Logistics outsourcing is not about replacing name tags at outsourced facilities. It's working smarter across the entire supply chain to achieve the highest levels of performance, at the greatest overall value for our clients. For that, you need talented resources to simplify and automate processes. And you need systems to analyze, access, and manage critical supply chain information – systems that are in-place and quickly deployable. Our people, operations and use of applied technology make all the difference.

We thrive on large, complex operations.

We have the resources and capabilities to handle any challenge. From distribution center operations and transportation management to highly sophisticated and technology-focused solutions for reverse logistics, repair and refurbishment, service parts management, manufacturing support, materials management and procurement, and supply chain consulting, our combination of expertise, resources and technology allow us to provide complete visibility and improved levels of control over operations.

We're as big as you need us to be, but never overlook the smallest details. We manage millions of square feet of warehouse space across more than 50 distribution centers and employ more than 7,000 people. Our strength lies in developing and implementing comprehensive solutions for complex, high-volume, high-velocity, and high-value supply chain operations.

We meet the requirements. But we strive to set the standard.


New Breed operations conform to all the requirements of ISO 9001:2008, AS9120:2002, and ISO 14001:2004 standards for logistical warehousing, transportation management, distribution, returns processing, repair, and remanufacturing services. But at New Breed, simply meeting the standard is never enough. We demand and expect more of ourselves, because we know you demand and expect more of us – and you should.

We invest in our clients' success.

New Breed believes in long-term, collaborative client relationships and prudent risk sharing in pursuit of creating sustained value. We invest in labor and capital to support client solutions because we believe that if our clients succeed, so do we.

We are ready to partner with you.

Visit www.NewBreed.com to learn more about why some of the world's most respected organizations rely on New Breed, or contact us today to discuss what we can do for you. Discover for yourself why we are a new breed of 3PL.



Louis DeJoy, CEO

During our 41 year history we've continually strived to define what it means to be a new breed of 3PL.

Our use of applied technology, focus on operational excellence, and people – empowered by a culture that rewards innovation and originality – bring new levels of visibility and control to supply chains that support warehousing and distribution, manufacturing, returns, repair and refurbishment, critical service parts networks, and materials management and procurement.

Our investment in clients' success, and collaborative relationships with those clients, build trust and confidence in partnerships that create immediate results and lasting value.

I invite you to learn more about what a new breed of 3PL can do for you.

New Breed Logistics
 4043 Piedmont Parkway, High Point, NC 27265
 1.866.463.9273 | info@newbreed.com
www.newbreed.com



NEW BREED
 LOGISTICS

Saddle Creek Corporation ■ The Integrated Advantage



Cliff Otto

President
Saddle Creek Corporation

As a nationwide third-party logistics company, we tailor our integrated logistics solutions – dedicated and shared warehousing, transportation, and contract packaging – to help optimize your supply chain.

Whether you want to increase efficiencies in your supply chain, streamline your business or manage operational costs, Saddle Creek Corporation delivers the creative, integrated logistics capabilities you need.

We'll bring you new ideas for single-source solutions that can help manage costs and increase efficiency using our wide array of services:

- **Integrated Logistics** – We will develop a logistics program tailored to fit your business and give you a competitive advantage – from cross-docking centers to kitting special retail packs to LTL deliveries.
- **Warehousing** – We're ready to face your toughest warehousing and distribution challenges, from outsourcing current distribution operations to establishing a forward distribution center.
- **Transportation** – We offer a full range of transportation capabilities nationwide, including truckload, LTL, flatbed, and consolidation services.
- **Contract Packaging** – Whether it's assembling gift sets, producing POP displays, or printing and applying labels, we'll design a turnkey program that addresses your toughest packaging challenges.

Our services are backed by best-in-class software tools, and our systems can be fully integrated with yours to provide accurate, up-to-the-minute information. We harness the power of leading-edge technology to find innovative logistics solutions that work for you.

While we deliver all of these “big company” capabilities, we offer the personal attention and responsiveness of a more nimble organization. We never lose sight of our commitment to service excellence. We pride ourselves on providing 1st Class 3rd Party solutions and services for our customers – *Whatever It Takes!*



3010 Saddle Creek Road
Lakeland, Florida 33801
863-665-0966
info@saddlecrk.com
www.saddlecrk.com



SoluciónSM

Simplifying **OPERATIONS**

Solución designs and implements innovative workforce solutions for the manufacturing, distribution and packaging industries. We evaluate work-flow and develop efficient, fixed-cost solutions that allow businesses to increase profit by reducing wasted time and labor.

Founded with a mission to meet demands and create solutions, Solución has provided companies with effective processes to decrease labor costs and increase performance standards for over 10 years. With our newly expanded home office located in Huntersville, NC, Solución has a dedicated and committed staff that serves the growing needs of our clients coast-to-coast.



Solución designs and implements innovative workforce solutions for the manufacturing, distribution and packaging industries.

With a background in many industries, we partner with our clients to develop a deeper understanding of their needs in order to work beside them as true stakeholders in their business. Solución's experience extends throughout the product supply chain in fields such as: automotive, electronics, grocery distribution, home goods, industrial products fulfillment, outboard and marine products, retail distribution and tools/hardware.

Our extensive experience in engineering support, operations management and recruiting services allows us to provide our clients with labor solutions. We provide quality labor which meet all employment eligibility requirements.

Engineering Support

Solución provides services that streamline and simplify your operation. We accomplish this by:

- Analyzing line balance
- Waste elimination techniques
- Developing methods training for workers

Recruitment Services

Solución unites with clients to aid in quality worker recruitment. We assist with:

- One-on-one interviews with each candidate
- Verification of work history
- Associate orientation

Operations Management

By implementing Solución's labor management practices, businesses can see measurable improvements in:

- Cost reduction
- On-time delivery
- Attendance and turnover

Solución is committed to simplifying operations by understanding your needs and objectives, analyzing experiences, evaluating work processes and developing fixed-cost resource solutions which can help save you money.

Allow Solución to exceed your expectations in production, on-time delivery, quality standards and regulatory compliance and you'll see the true benefits of "Simplifying **OPERATIONS**".



SoluciónSM

Simplifying **OPERATIONS**

8936 NorthPointe Executive Park Drive • Suite 150 • Huntersville, NC 28078

solucionllc.com • 888-688-0388